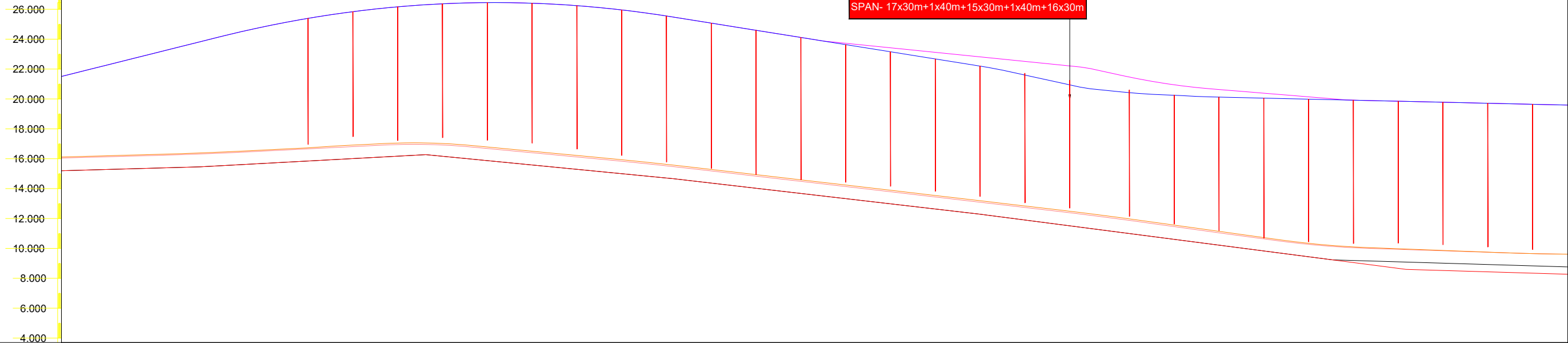
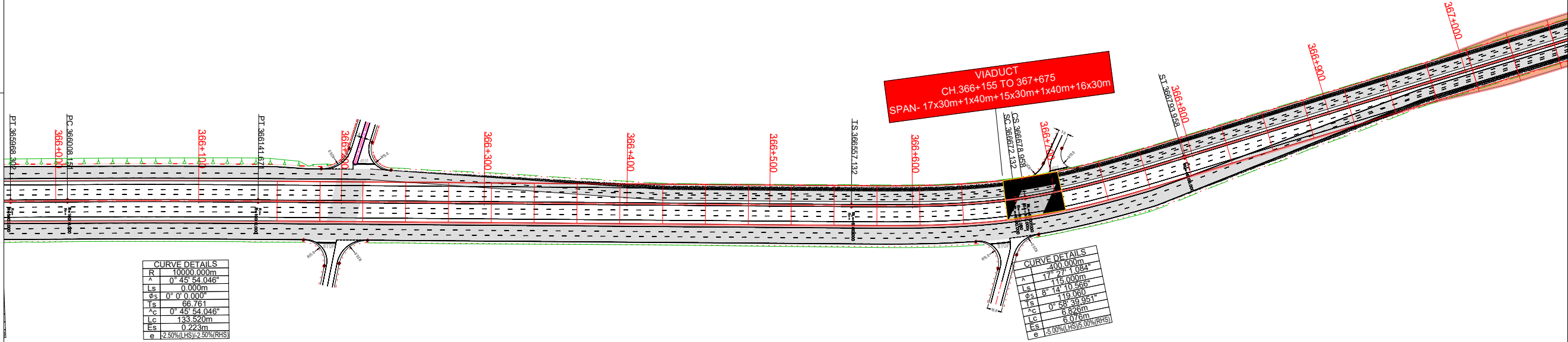
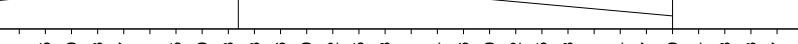
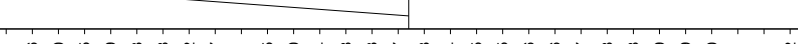




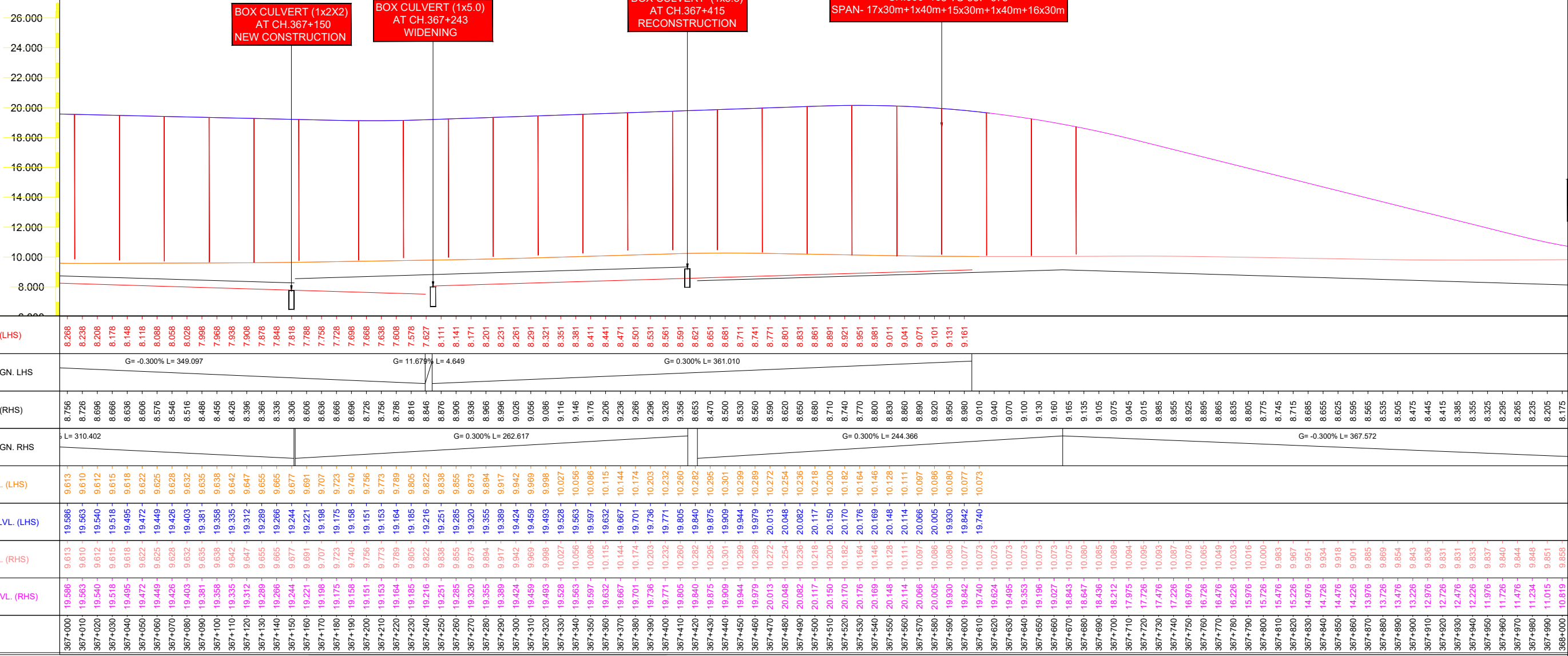
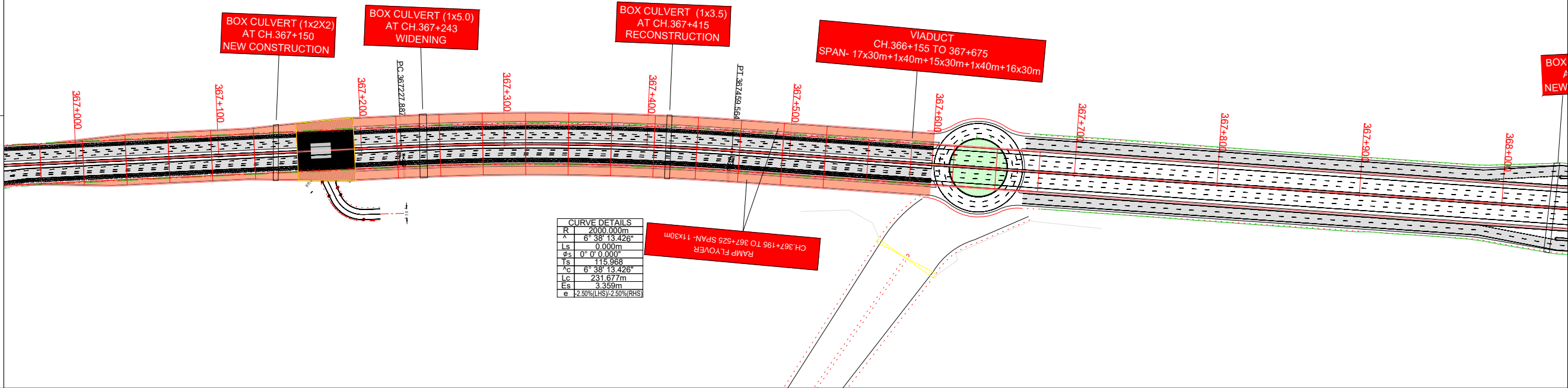


PROPOSED PLAN
E.S.H EDGE
P.S.H EDGE
MEDIAN EDGE
CENTER LINE
HOR. TANGENT POINT
VIADUCT
BOX CULVERT



Drain Inv. Lvl. (LHS)	15.224	15.253	15.281	15.309	15.338	15.366	15.394	15.422	15.451	15.497	15.551	15.605	15.659	15.713	15.767	15.821	15.875	15.929	15.983	16.037	16.091	16.145	16.199	16.253	16.213	16.116	16.019	15.922	15.825	15.728	15.631	15.534	15.436	15.339	15.242	15.145	15.048	14.951	14.854	14.757	14.659	14.544	14.428	14.313	14.197	14.081	13.966	13.850	13.735	13.619	13.503	13.388	13.272	13.157	13.041	12.925	12.810	12.694	12.578	12.463	12.347	12.233	12.094	11.965	11.835	11.706	11.576	11.447	11.318	11.188	11.059	10.929	10.800	10.671	10.541	10.412	10.282	10.153	10.024	9.894	9.765	9.635	9.506	9.377	9.247	9.118	8.988	8.859	8.730	8.600	8.471	8.341	8.211	8.081	7.951	7.821	7.691	7.561	7.431	7.301	7.171	7.041	6.911	6.781	6.651	6.521	6.391	6.261	6.131	6.001	5.871	5.741	5.611	5.481	5.351	5.221	5.091	4.961	4.831	4.701	4.571	4.441	4.311	4.181	4.051	3.921	3.791	3.661	3.531	3.401	3.271	3.141	3.011	2.881	2.751	2.621	2.491	2.361	2.231	2.101	1.971	1.841	1.711	1.581	1.451	1.321	1.191	1.061	0.931	0.801	0.671	0.541	0.411	0.281	0.151	0.021	0.000																																																																																																																																																																																																																																																																																																																																																																																																																																																																																																		
VERTICAL ALGN. LHS	92.925																																																																																																																																																																																																																																																																																																																																																																																																																																																																																																																																																																																																																																																														
Drain Inv. Lvl. (RHS)	15.224	15.253	15.281	15.309	15.338	15.366	15.394	15.422	15.451	15.497	15.551	15.605	15.659	15.713	15.767	15.821	15.875	15.929	15.983	16.037	16.091	16.145	16.199	16.253	16.213	16.116	16.019	15.922	15.825	15.728	15.631	15.534	15.436	15.339	15.242	15.145	15.048	14.951	14.854	14.757	14.659	14.544	14.428	14.313	14.197	14.081	13.966	13.850	13.735	13.619	13.503	13.388	13.272	13.157	13.041	12.925	12.810	12.694	12.578	12.463	12.347	12.233	12.094	11.965	11.835	11.706	11.576	11.447	11.318	11.188	11.059	10.929	10.800	10.671	10.541	10.412	10.282	10.153	10.024	9.894	9.765	9.635	9.506	9.377	9.247	9.118	8.988	8.859	8.730	8.600	8.471	8.341	8.211	8.081	7.951	7.821	7.691	7.561	7.431	7.301	7.171	7.041	6.911	6.781	6.651	6.521	6.391	6.261	6.131	6.001	5.871	5.741	5.611	5.481	5.351	5.221	5.091	4.961	4.831	4.701	4.571	4.441	4.311	4.181	4.051	3.921	3.791	3.661	3.531	3.401	3.271	3.141	3.011	2.881	2.751	2.621	2.491	2.361	2.231	2.101	1.971	1.841	1.711	1.581	1.451	1.321	1.191	1.061	0.931	0.801	0.671	0.541	0.411	0.281	0.151	0.021	0.000																																																																																																																																																																																																																																																																																																																																																																																																																																																																																																		
VERTICAL ALGN. RHS	92.925																																																																																																																																																																																																																																																																																																																																																																																																																																																																																																																																																																																																																																																														
SR EDGE LVL. (LHS)	16.142	16.170	16.198	16.226	16.254	16.281	16.309	16.337	16.365	16.393	16.421	16.449	16.477	16.505	16.533	16.561	16.589	16.617	16.645	16.673	16.701	16.729	16.757	16.785	16.813	16.841	16.869	16.897	16.925	16.953	16.981	17.009	17.037	17.065	17.093	17.121	17.149	17.177	17.205	17.233	17.261	17.289	17.317	17.345	17.373	17.401	17.429	17.457	17.485	17.513	17.541	17.569	17.597	17.625	17.653	17.681	17.709	17.737	17.765	17.793	17.821	17.849	17.877	17.905	17.933	17.961	17.989	18.017	18.045	18.073	18.101	18.129	18.157	18.185	18.213	18.241	18.269	18.297	18.325	18.353	18.381	18.409	18.437	18.465	18.493	18.521	18.549	18.577	18.605	18.633	18.661	18.689	18.717	18.745	18.773	18.801	18.829	18.857	18.885	18.913	18.941	18.969	18.997	19.025	19.053	19.081	19.109	19.137	19.165	19.193	19.221	19.249	19.277	19.305	19.333	19.361	19.389	19.417	19.445	19.473	19.501	19.529	19.557	19.585	19.613	19.641	19.669	19.697	19.725	19.753	19.781	19.809	19.837	19.865	19.893	19.921	19.949	19.977	20.005	20.033	20.061	20.089	20.117	20.145	20.173	20.201	20.229	20.257	20.285	20.313	20.341	20.369	20.397	20.425	20.453	20.481	20.509	20.537	20.565	20.593	20.621	20.649	20.677	20.705	20.733	20.761	20.789	20.817	20.845	20.873	20.901	20.929	20.957	20.985	21.013	21.041	21.069	21.097	21.125	21.153	21.181	21.209	21.237	21.265	21.293	21.321	21.349	21.377	21.405	21.433	21.461	21.489	21.517	21.545	21.573	21.601	21.629	21.657	21.685	21.713	21.741	21.769	21.797	21.825	21.853	21.881	21.909	21.937	21.965	21.993	22.021	22.049	22.077	22.105	22.133	22.161	22.189	22.217	22.245	22.273	22.301	22.329	22.357	22.385	22.413	22.441	22.469	22.497	22.525	22.553	22.581	22.609	22.637	22.665	22.693	22.721	22.749	22.777	22.805	22.833	22.861	22.889	22.917	22.945	22.973	23.001	23.029	23.057	23.085	23.113	23.141	23.169	23.197	23.225	23.253	23.281	23.309	23.337	23.365	23.393	23.421	23.449	23.477	23.505	23.533	23.561	23.589	23.617	23.645	23.673	23.701	23.729	23.757	23.785	23.813	23.841	23.869	23.897	23.925	23.953	23.981	24.009	24.037	24.065	24.093	24.121	24.149	24.177	24.205	24.233	24.261	24.289	24.317	24.345	24.373	24.401	24.429	24.457	24.485	24.513	24.541	24.569	24.597	24.625	24.653	24.681	24.709	24.737	24.765	24.793	24.821	24.849	24.877	24.905	24.933	24.961	24.989	25.017	25.045	25.073	25.101	25.129	25.157	25.185	25.213	25.241	25.269	25.297	25.325	25.353	25.381	25.409	25.437	25.465	25.493	25.521	25.549	25.577	25.605	25.633	25.661	25.689	25.717	25.745	25.773	25.801	25.829	25.857	25.885	25.913	25.941	25.969	25.997	26.025	26.053	26.081	26.109	26.137	26.165	26.193	26.221	26.249	26.277	26.305	26.333	26.361	26.389	26.417	26.445	26.473	26.501	26.529	26.557	26.585	26.613	26.641	26.669	26.697	26.725	26.753	26.781	26.809	26.837	26.865	26.893	26.921	26.949	26.977	27.005	27.033	27.061	27.089	27.117	27.145	27.173	27.201	27.229	27.257	27.285	27.313	27.341	27.369	27.397	27.425	27.453	27.481	27.509	27.537	27.565	27.593	27.621	27.649	27.677	27.705	27.733	27.761	27.789	27.817	27.845	27.873	27.901	27.929	27.957	27.985	28.013	28.041	28.069	28.097	28.125	28.153	28.181	28.209	28.237	28.265	28.293	28.321	28.349	28.377	28.405	28.433	28.461	28.489	28.517	28.545	28.573	28.601	28.629	28.657	28.685	28.713	28.741	28.769	28.797	28.825	28.853	28.881	28.909	28.937	28.965	28.993	29.021	29.049	29.077	29.105	29.133	29.161	29.189	29.217	29.245	29.273	29.301	29.329	29.357	29.385	29.413	29.441	29.469	29.497	29.525	29.553	29.581	29.609	29.637	29.665	29.693	29.721	29.749	29.777	29.805	29.833	29.861	29.889	29.917	29.945	29.973	30.001	30.029	30.057	30.085	30.113	30.141	30.169	30.197	30.225	30.253	30.281	30.309	30.337	30.365	30.393	30.421	30.449	30.477	30.505	30.533	30.561	30.589	30.617	30.645	30.673	30.701	30.729	30.757	30.785	30.813	30.841	30.869	30.897	30.925	30.953	30.981	31.009	31.037	31.065	31.093	31.121	31.149	31.177	31.205	31.233	31.261	31.289	31.317	31.345	31.373	31.401	31.429	31.457	31.485	31.513	31.541	31.569	31.597	31.625	31.653	31.681	31.709	31.737	31.765	31.793	31.821	31.849	31.877	31.905	31.933	31.961	31.989	32.017	32.045	32.073	32.101	32.129	32.157	32.185	32.213	32.241	32.269	32.297	32.325	32.353	32.381	32.409	32.437	32.465	32.493	32.521	32.549	32.577	32.605	32.633	32.661	32.689	32.717	32.745	32.773	32.801	32.829	32.857	32.885	32.913	32.941	32.969	32.997	33.025	33.053	33.081	33.109	33.137	33.165	33.193	33.221	33.249	33.277	33.305	33.333	33.361	33.389	33.417	33.445	33.473	33.501	33.529	33.557	33.585	33.613	33.641	33.669	33.697	33.725	33.753	33.781	33.809	33.837	33.865	33.893	33.921	33.949	33.977	34.00

PROPOSED PLAN
E.S.H EDGE
P.S.H EDGE
MEDIAN EDGE
CENTER LINE
HOR. TANGENT POINT
VIADUCT
BOX CULVERT





REV.	DATE	DESCRIPTION

AUTHORITY:
NATIONAL HIGHWAYS
AUTHORITY OF INDIA
(Ministry of Shipping, Road Transport and Highways)



DPR CONSULTANT
M/s CHAITANYA PROJECTS
CONSULTANCY PVT. LTD.

IN ASSOCIATION WITH
MSPARK FUTURISTICS &
ASSOCIATES



NAME OF PROJECT
CONSULTANCY SERVICES FOR PREPARATION OF
DETAILED PROJECT REPORT (DPR) FOR
DEVELOPMENT OF VARIOUS PORT CONNECTIVITY
STRETCHES UNDER PORT CONNECTIVITY MASTER
PLAN OF KIOCL FLYOVER IN THE STATE OF
KARNATAKA.

DRAWN	S.S.
DESIGNED	A.S.
PROOF CHECKED	
APPROVED	

TITLE:
PLAN AND PROFILE FOR DRAINAGE
AT (CH: 367+000 TO CH: 368+000)

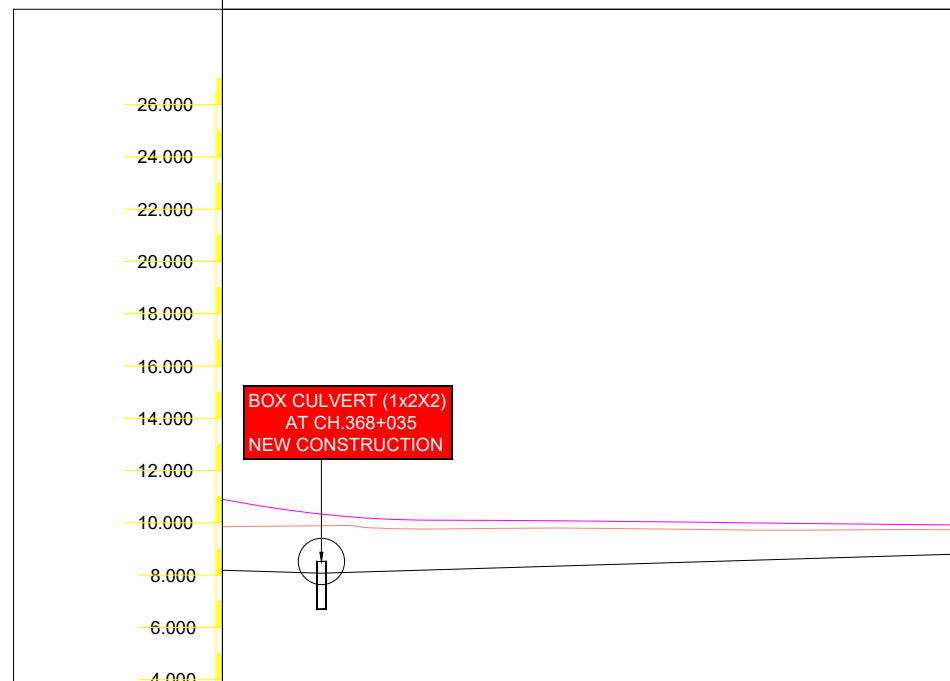
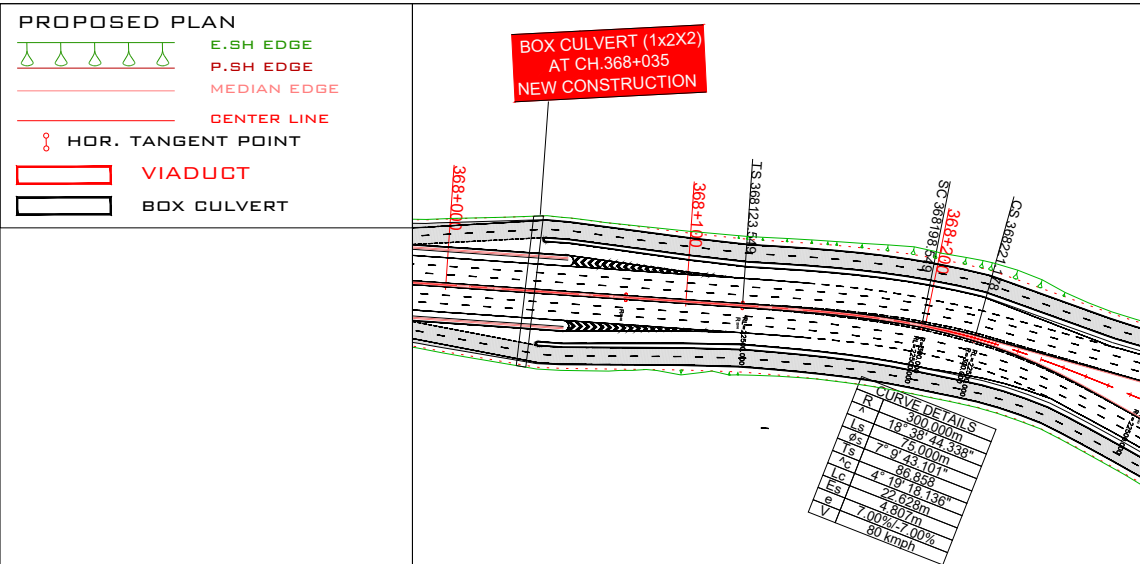
SCALE:
HOR - (1:2000)
VER - (1:200)

DRG. NO:
CP/MSPARK/KIOCL-03

DATE:
"FEB., 2026"

SHEET
03 OF 04

REV:
R0

[illegible][illegible]

AUTHORITY:

**NATIONAL HIGHWAYS
AUTHORITY OF INDIA**
(Ministry of Shipping, Road Transport and Highways)



DPR CONSULTANT

M/S CHAITANYA PROJECTS
CONSULTANCY PVT. LTD.



IN ASSOCIATION WITH

MSPARK FUTURISTICS & ASSOCIATES



NAME OF PROJECT

CONSULTANCY SERVICES FOR PREPARATION OF DETAILED PROJECT REPORT (DPR) FOR DEVELOPMENT OF VARIOUS PORT CONNECTIVITY STRETCHES UNDER PORT CONNECTIVITY MASTER PLAN OF KIOCL FLYOVER IN THE STATE OF KARNATAKA.

DRAWN	S.S.
DESIGNED	A.S.
PROOF CHECKED	
APPROVED	

TITLE:

PLAN AND PROFILE FOR DRAINAGE AT (CH: 368+000 TO CH: 368+271)

SCALE:

HOR - (1:2000)
VER - (1:200)

DRG. NO:

CP/MSPARK/KIOCL/-04

DATE:

"FEB., 2026"

SHEET
04 OF 04

REV: B0